

**RDC DEUTSCHLAND GROUP  
COMPANY BROCHURE**

**RDC**

*Zugkraft, die verbindet.*



**Zugkraft,  
die verbindet.**

[rdc-deutschland.de](https://rdc-deutschland.de)

# Dear Sir or Madam, dear partners and friends of rail,

Mobility is more than just getting from A to B. It connects people, regions, and ideas. That is exactly what we stand for at RDC Deutschland. We are committed to rail transport that puts people first.

As part of the Railroad Development Corporation, we invest in railway businesses with a focus on night trains, infrastructure, and workshops, as well as in passenger and freight transport in our core region of Schleswig-Holstein. But what this really means is not only reflected in technology and scheduling, but above all in our attitude. We listen, roll up our sleeves, and work together with our customers and partners to find creative solutions that work in practice and have a lasting impact.

Every day, more than 430 dedicated colleagues contribute their expertise, experience, and passion to the RDC Deutschland Group. Whether on the train, in the workshops, on the infrastructure, or behind the scenes, they all make possible what we are proud of: a safe rail transport service that moves and connects people. True to our motto: Zugkraft, die verbindet. (Traction that unites).

This brochure gives you an insight into what we do, our team, and what drives us. We would be delighted if you would accompany us on our journey.

Kind regards

**Dr. Markus Hunkel**  
Chief Executive Officer  
RDC Deutschland



## SCHEDULE

- COMPANY: RDC DEUTSCHLAND ..... 4**
- BUSINESS AREAS & PORTFOLIO ..... 10**
- TEAM & CORPORATE CULTURE ..... 28**
- ENGAGEMENT ..... 34**
- QUALITY & REFERENCES ..... 40**
- CONTACT ..... 43**

**Publisher:**  
RDC Deutschland GmbH  
Altonaer Poststr. 9, 22767 Hamburg  
[info@rdc-deutschland.de](mailto:info@rdc-deutschland.de)  
[www.rdc-deutschland.de](http://www.rdc-deutschland.de)

**Editorial and design:**  
Nicole Pizzuti, Kristoffer Laib

**Contact editorial team:**  
[presse@rdc-deutschland.de](mailto:presse@rdc-deutschland.de)

**Credits:**  
Unless otherwise stated, the image credit is RDC Deutschland.

**Status:** July 2026

All rights reserved by the publisher. Reproduction, including excerpts, is only permitted with the express written consent of the publisher.



# RDC Deutschland

The RDC Deutschland Group has its roots in Pittsburgh, Pennsylvania, USA. Henry Posner III founded the Railroad Development Corporation (RDC) there around 30 years ago. He is active with RDC as a global railway investment and management company that focuses on bold, ambitious partnerships. The company invests in railway systems in emerging markets. RDC is an active operator in the USA, Latin America, Germany, England, France, and Belgium. RDC Deutschland was founded in Germany in 2009 and is based in Hamburg.

Our vision is to invest in sustainable mobility - but even more important to us are the people and partners who are shaping the future of the industry together with us. With over 430 employees in seven specialized companies, we are shaping mobility in Germany and Europe.

As the leading private railway in Schleswig-Holstein and in German and European night train service, we connect regions, people, and perspectives every day. Our mission is to provide reliable, customer-focused, and innovative rail transport services from the North Sea coast to European cities.

Our strength lies in the diversity of expertise within the group, which is united by shared values and a clear goal: to play an active role in shaping the future of rail.

## IN A NUTSHELL:



**1 million**  
passengers annually



**68**  
journeys/trains daily



**50.000**  
vehicle kilometers daily



**430**  
employees



**3**  
workshops



**100 km**  
infrastructure



**7 companies at**  
**12 locations**

## THE GROUP INCLUDES:

### RDC AUTOZUG SYLT GMBH

WESTERLAND/SYLT

Passenger Travel by Car to Sylt and  
Freight Transport in Schleswig-Holstein

### NORDDEUTSCHE EISENBAHN NIEBÜLL GMBH

NIEBÜLL

Railway operations and infrastructure management in Schleswig-Holstein

### RDC ASSET GMBH

HAMBURG

Fleet management, vehicle purchasing and leasing

### RDC DEUTSCHLAND GMBH

HAMBURG

Corporate management, sales, and project development

### FARGE-VEGESACKER EISENBAHN-GESELLSCHAFT MBH

BREMEN

Infrastructure management in northern Bremen

### TEUTOBURGER WALD EISENBAHN GMBH

GÜTERSLOH

Infrastructure management in North Rhine-Westphalia

### BTE BAHNTOURISTIKEXPRESS GMBH

NÜRNBERG

Night and special train services in Germany and Europe

# Safety as the foundation of our actions

It all starts with a first step, and that step is safety. Safety forms the unshakeable foundation of our corporate culture and is a prerequisite for the highest quality and sustainable success. It enables us to act confidently as a respected and responsible member of the German railway community. Respect is more than just a word for us. It is the guiding principle behind everything we do. Integrity and decency shape our decisions and our behavior. We stand by our word. We keep our promises, and what we do is always transparent and reliable.

Success comes when people work together. That's why we rely on teamwork, modern technologies, reliable structures, and strong partnerships. Together, we're shaping the future of mobility and driving the industry forward—with foresight, responsibility, and a clear focus on what unites us.

- Berlin 
- Bremen 
- Gütersloh 
- Hamburg 
- Husum 
- Neumünster 
- Niebüll 
- Nuremberg 
- Lengerich 
- Lörrach 
- Sylt/Westerland 
- Vienna 



## RELIABLE STRUCTURES - RESPONSIBILITY IN PRACTICE

As an operator of critical infrastructure in accordance with the BSI Act, responsible corporate governance is a matter of course for us. With our integrated management system, we act in a consistently process-oriented manner. Regular audits not only reveal potential for development, but also confirm the efficiency and reliability of our process chains.

## CLEAR ORGANIZATION - STRONG LOCATIONS

The RDC Deutschland Group manages its administrative activities centrally from **Hamburg**. Our operational sites for Norddeutsche Eisenbahn Niebüll GmbH and RDC AUTOZUG Sylt GmbH are located in **Niebüll** in North Frisia - the operational center of our company.

The RDC Deutschland Group also includes Farge-Vegesacker Eisenbahn GmbH, based in Bremen, Teutoburger Wald Eisenbahn GmbH, which operates in Gütersloh, Westphalia, and BahnTouristikExpress, with operational sites in Berlin and Hamburg.

Our portfolio is complemented by two of our own workshops in Niebüll and Lengerich, as well as a stake in another maintenance site in Vienna. Our own fleet comprises over 200 vehicles. Vehicle management, like central dispatching, is located directly in Niebüll. Close integration with our maintenance departments guarantees smooth processes, short distances, and high availability at all times.

# Development and growth thanks to courage and creativity

## LAUNCH OF HKX

RDC's history in Germany began with the **Hamburg-Köln-Express (HKX)**, which challenged DB in long-distance scheduled service. In 2018, the route was integrated into the emerging Flixtrain network.

## LAUNCH OF AUTOZUG SYLT

With the **blue AUTOZUG Sylt**, we are competing with DB on the prestigious Sylt route, and from 2018 we will even have our own RU (Railroad Undertaking) license.

## LAUNCH OF NEX

The freed-up resources were used to quickly create a new night train product, the **ALPEN-SYLT Nachtexpress (NEX)**. This success story laid the foundation for subsequent cooperation with SBB, SJ, and ÖBB.

## ACQUISITION OF TWE/FVE

With **Teutoburger Wald Eisenbahn GmbH (TWE)** and **Farge-Vegesacker Eisenbahn-Gesellschaft mbH (FVE)**, our group has been expanded to include two established infrastructure companies with a rail network of over 65 km and a workshop in Lengerich.

## ACQUISITION OF BTE

Following the acquisition of the experienced rail company **BTE Bahn-TouristikExpress GmbH (BTE)**, we launched our first night train product, the **BTE AutoReiseZug**.

## TERMINATION OF FLIXTRAIN CONTRACT

The coronavirus crisis brought long-distance transport to a halt overnight, leaving behind an efficient organization and a large fleet - but hardly any business.

## ACQUISITION OF NEG

**Norddeutsche Eisenbahn Niebüll GmbH (NEG)** is an established railway company that strengthens the market position of the RDC Deutschland Group in Schleswig-Holstein.

## TAKEOVER OF THE BERLIN-STOCKHOLM NIGHT TRAIN

Since 2022, we have been operating the EuroNight service between Berlin, Hamburg, and Stockholm on behalf of SJ. Following the end of funding from Trafikverket, we have been operating this special north-south route independently since September 1.

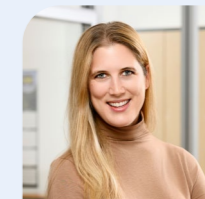
2012 | 2013 | 2014 | 2015 | 2016 | 2017 | 2018 | 2019 | 2020 | 2021 | 2022 | 2023 | 2024 | 2025 | 2026

## BOARD RDC DEUTSCHLAND

**HENRY  
POSNER III**



**IDA  
POSNER**



**ALEXANDER  
HEDDERICH**



**JOHN  
HENSLER**



# Well positioned for the future of rail

As the RDC Deutschland Group, we are active in almost all areas of the railway industry - with a clear focus on quality, reliability, and sustainability. We bundle our services into three strategic business areas:

In the **Schleswig-Holstein** business area, we combine rail mobility with regional roots. The blue AUTOZUG Sylt, local rail passenger transport, and our freight transport offer flexible and high-performance services for passengers and companies in northern Germany.

Our second pillar is **Night Trains and Fleet**. Here, we not only operate our own night train products in international traffic, but also provide reliable mobility solutions for partners with a versatile fleet and customized rail services.

The third business area, **Infrastructure and Workshops**, forms a strong foundation. With our own infrastructure and modern workshop capacities, we create the basis for safe, economical, and future-oriented rail operations—for our own services and for external customers.

Thus we contribute to sustainable rail mobility in Germany and beyond.



## SCHLESWIG-HOLSTEIN



AUTOZUG SYLT | 12



LOCAL PASSENGER TRANSPORT | 14



FREIGHT TRANSPORT | 16



## NIGHT TRAINS & FLEET



NIGHT TRAIN SERVICES | 18



FLEET MANAGEMENT | 20



RAILWAY SERVICES | 22



## INFRASTRUCTURE & WORKSHOPS



INFRASTRUCTURE | 24



WORKSHOP | 26



AUTOZUG SYLT

# The blue AUTOZUG Sylt - We are the bridge to Sylt

On October 18, 2016, the blue AUTOZUG Sylt made its maiden voyage and crossed the causeway to Sylt. At that time, we started with four trips a day - today there are up to 24 connections per day, 365 days a year. Our service has continued to evolve. In addition to cars and small vans, we now also transport SUVs, motorhomes of all kinds, heavy trucks, buses, and vehicles with trailers or caravans.

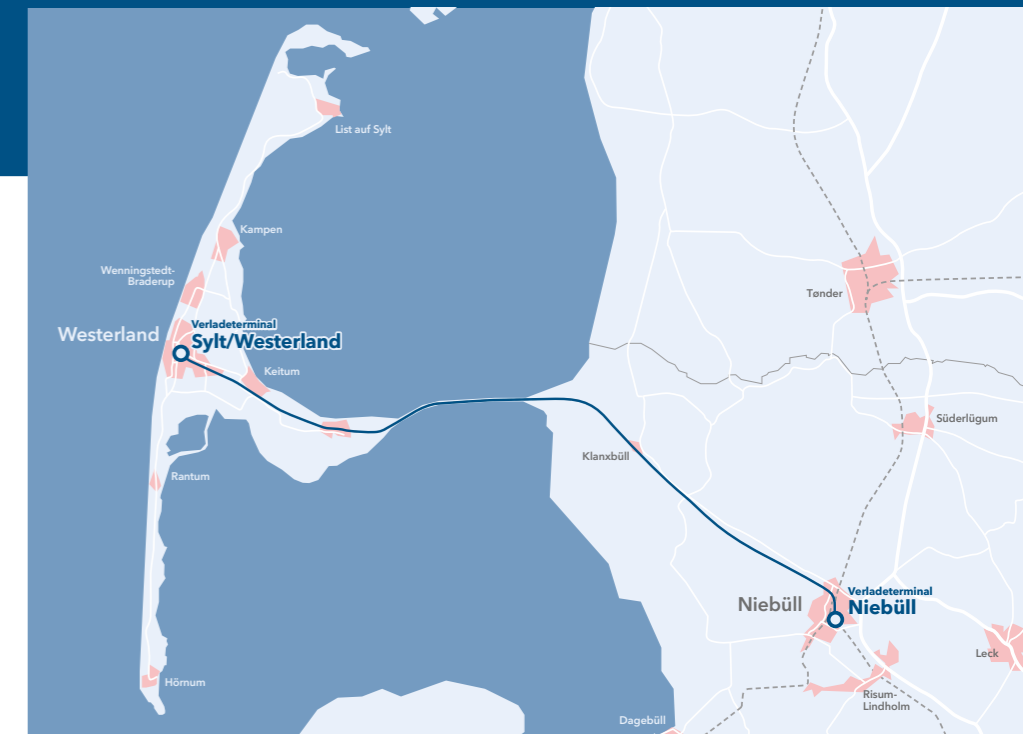
Our claim is more than just transport - personal and service-oriented customer contact is firmly anchored in our company. With our own booking platform at [www.autozug-sylt.de](http://www.autozug-sylt.de), we offer a modern, uncomplicated, and reliable digital service. As a regional partner and employer, the blue AUTOZUG Sylt feels committed to its responsibility for the island and the local people. We are committed to

sustainable projects such as "Sylt räumt auf" (Sylt cleans up) and "Revolution Train." We also support sporting highlights and clubs, including the RDC Catamaran Festival and the Rynkeby cycling team.



- ✓ Up to 24 departures per day
- ✓ Free WiFi on the train
- ✓ Unobstructed view of the Wadden Sea
- ✓ Personal service on site
- ✓ Radio Sylt from the blue AUTOZUG Sylt

Tickets available at: [autozug-sylt.de](http://autozug-sylt.de)





IN A NUTSHELL:

Number:	<b>RB 65</b>	<b>RB 66</b>
Route:	Niebüll - Dagebüll	Niebüll - Tønder
Contractual partners:	NAH.SH and DB Fernverkehr	GoCollective and NAH.SH
Passengers:	373,000 per year (2025)	
Train kilometers:	216,000 per year (2025)	

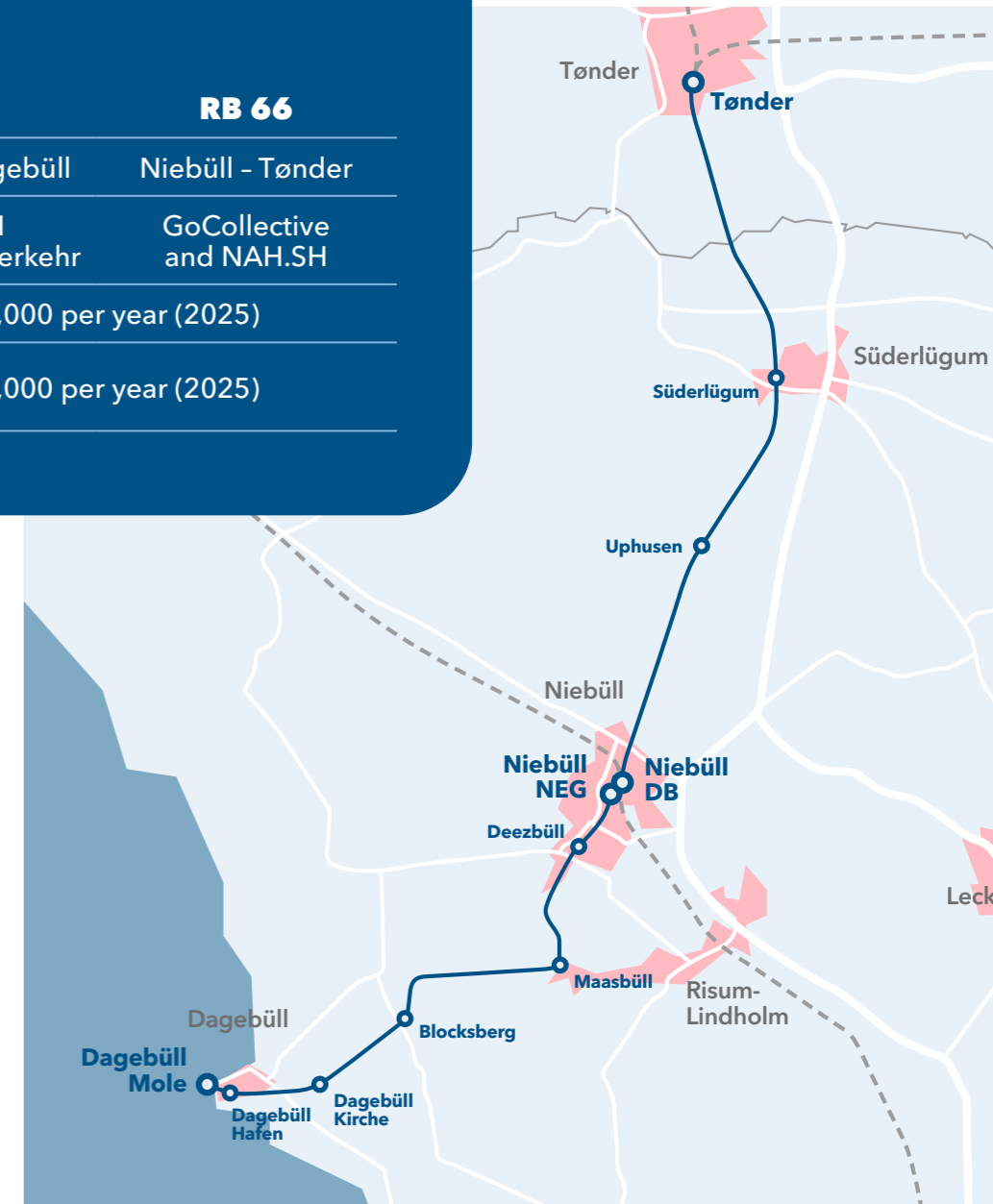
LOCAL PASSENGER TRANSPORT

Since 1895 - Travel quickly and comfortably to the sea with NEG

For over 130 years, the **Norddeutsche Eisenbahn Niebüll** has connected the mainland with the island ferries between Niebüll and Dagebüll - reliably, quickly, and with a focus on customer service. In addition, we have been offering cross-border connections to Tønder in Denmark since 2002, making us an important partner in international regional transport.

The cross-border RB 66 line connects **Niebüll** with **Tønder** and continues on to Esbjerg in Denmark. As part of the international rail infrastructure, the Railroad Development Corporation ensures reliable and sustainable train service between Germany and Denmark.

Along the 13-kilometer route between **Niebüll and Dagebüll**, the stations were modernized in 2024. The new platform hall at the Dagebüll-Mole terminus impresses with a closed waiting area, an improved passenger information system, and energy-efficient LED lighting—comfort and service for vacationers, commuters, and locals alike.





FREIGHT TRANSPORT

# Your full-service partner for sustainable rail freight transport

Since December 2020, RDC Güterzug Schleswig-Holstein has been offering corporate customers the full range of freight transport services. This includes regular rail services between the mainland and the island of Sylt - three times a week and tailored to individual needs. As a full-service provider, we offer special trips in addition to regular scheduled services - whether for tank cars, special transports, construction site logistics, or transfer trips. This is how we combine flexibility with environmentally conscious transport.

Our range of services encompasses much more than just train journeys. From wagon provision and shunting to complete train services, we provide comprehensive logistics and service offerings from a single source.

## FROM ROAD TO RAIL - FOR GREATER SUSTAINABILITY IN FREIGHT TRANSPORT

The shift of goods to rail is the key to greater energy efficiency and environmental protection, especially in short- and long-distance transport. The strength of rail freight transport as a sustainable and economical solution is particularly evident over long distances.

## OUR SERVICES IN FREIGHT TRANSPORT



### REGULAR SERVICE

Several times a week between Niebüll and Sylt



### SPECIAL SERVICES

Tank truck & special transports, construction site & transfer transports



### INFRASTRUCTURE

Own routes and service facilities (see also page 24)



### RAILWAY SERVICES

Rental of fleet & personnel (see also pages 20 & 22)





NIGHT TRAIN SERVICES

# Traveling at night - sustainable, comfortable, throughout Europe

Whether traveling across Germany or to the far north, the night trains of the RDC Deutschland Group bring passengers to their destinations comfortably, climate-friendly, and relaxed. While the world sleeps, we connect people, cities, and countries—covering up to 1,500 kilometers without any transfers or flights. With our sleeping cars, seating cars, and couchette cars, we create comfortable retreats for everyone who wants to travel sustainably and cover long distances with peace of mind.

### BTE AUTOREISEZUG

Since 2016, the BTE AutoReiseZug has been connecting the two ends of Germany overnight - from Hamburg-Altona to Lörrach in Baden-Württemberg. Passengers can take their own vehicles on board. The approximately 900-kilometer route takes pass-

engers comfortably from northern to southern Germany - without traffic jams, stress, or stopovers. Up to 200 passengers enjoy the journey in sleeping and couchette cars, while up to seven car transporters carry their own vehicles safely. The maintenance and servicing of the vehicle fleet is organized by RDC Asset in cooperation with specialized service providers and carried out in its own workshops.

### SJ EURONIGHT

RDC is taking on responsibility for an important European route. By operating a commercially viable service between Berlin, Hamburg, and Stockholm, we are continuing an established night train service and strengthening climate-friendly mobility between Germany and Scandinavia.

## NIGHT TRAIN PRODUCT SJ EURONIGHT

<b>Route</b>	Berlin - Hamburg - Stockholm
<b>Route length</b>	1500 km
<b>Started</b>	September 2022: ab Hamburg April 2023: ab Berlin
<b>RDC tasks</b>	Full service: <ul style="list-style-type: none"> <li>• Fleet and traction</li> <li>• Operating personnel</li> <li>• Laundry and catering logistics</li> <li>• Marketing and sales</li> </ul>

**Tickets:** [nachtexpress.de](https://nachtexpress.de) | [nattexpressen.se](https://nattexpressen.se)



## NIGHT TRAIN PRODUCT BTE AUTOREISEZUG

<b>Route</b>	May to October: Hamburg-Altona - Lörrach Gbf Decemberto April: Hamburg-Altona - Freiburg (Breisgau) Hbf - Lörrach Gbf
<b>Route length</b>	850 km
<b>Started</b>	December 2016
<b>RDC tasks</b>	Full service: <ul style="list-style-type: none"> <li>• Fleet &amp; traction</li> <li>• Operating &amp; loading personnel</li> <li>• Laundry and catering logistics</li> <li>• Marketing and sales</li> </ul>

**Tickets:** [bte-autoreisezug.de](https://bte-autoreisezug.de)



FLEET MANAGEMENT

# Your leading fleet partner for night and car trains in Germany

RDC Asset GmbH is responsible for vehicle rental and fleet management at RDC Deutschland. Founded in 2019, it has quickly made a name for itself in the industry. As the largest private provider of couchette and sleeping cars in Germany, we offer tailor-made solutions for reliable rail vehicles. We are proud to count SJ, SBB, and ÖBB among our long-standing and satisfied customers.

Our services range from the rental of locomotives, passenger cars, and freight cars to full-service contracts with comprehensive vehicle management in accordance with ECM levels I to IV. This enables us to guarantee the highest quality, safety, and reliability on the rails.

## OUR FLEET ▶

**4**  
electric locomotives

**5**  
mainline diesel locomotives

**4**  
shunting locomotives

**16**  
sleeper cars

**65**  
couchette cars

**27**  
seat cars

**5**  
railcars

**85**  
car transport wagons

**2**  
generator vans



RAILWAY SERVICES

# Your partner for modern mobility

**M**obility is more than just movement. It connects people, regions, and opportunities. We live and breathe rail, trains, and above all, cooperation—with passion, expertise, and the clear goal of creating the best, most sustainable mobility for today and tomorrow.

Whether special transport services, terminal services or professional personnel services - we stand for reliability, flexibility and the highest quality. As a strong partner for the rail industry, we rely on well-thought-out processes, trained personnel and a strong network.

Responsibility, experience, reliability - on the rails and in our team. Get to know us - we look forward to hearing from you.

## Temporary staffing - Our personnel for your trains

In an industry where planning reliability and flexibility are equally important, we offer reliable support with experienced specialists. Our train drivers, train conductors, train attendants, and service staff are ready to go at a moment's notice—whether for passenger or freight transport, at short notice or over longer periods.

Thanks to extensive vehicle training and regular refresher courses, we guarantee maximum operational readiness for a wide range of locomotive types and traction vehicles.

## AutoReiseZug - Loading and unloading by experts

Loading vehicles safely is precision work. Our loading supervisors and their teams have many years of experience in loading and unloading car transport trains. With well-established processes, a trained eye, and a strong sense of responsibility, we ensure smooth handling—from the first meter on the ramp to safe unloading at the destination.

## Special transport & charter trains - Individual & flexible

Whether it's a company party, trade fair event, or soccer game, we can arrange special transportation and charter trains according to your wishes. From vehicle provision to route planning and travel time management to service and catering, we take care of the entire organization and ensure that your trip is an experience to remember.

We also provide flexible and reliable transfer services for empty trains.

## Shunting services & service facilities in Hamburg

At our site in Hamburg-Langenhofe, we handle all shunting services - from provision at the terminal to last-mile service. We ensure smooth communication between all parties involved and a safe process. We also offer the supply and disposal of fresh and waste water for passenger vehicles.



INFRASTRUCTURE

# On track with RDC

With around 100 kilometers of our own track infrastructure in Bremen, North Rhine-Westphalia, and Schleswig-Holstein, we are your reliable partner for rail transport at the highest level. From initial planning to route registration, our qualified specialists are at your side with comprehensive expertise and personal service.

As an experienced infrastructure operator, we ensure the safe operation, maintenance, and ongoing modernization of our facilities and those of our customers—including tracks, train stations, signal boxes, and signaling systems.

## SIDING TRACKS

We offer rail carriers modern and easily accessible storage tracks for short- or long-term use. Whether for temporary storage, operational rotations, or seasonal storage—our track facilities meet the highest standards for safety and infrastructure. Benefit from customized solutions, fast response times, and optimal connections to the rail network.

### Overview of siding spaces:

- FVE:**
  - Bremen-Farge
- TWE:**
  - Gütersloh Nord
  - Gütersloh Ubf
  - Lengerich-Hohne
- NEG:**
  - Niebüll
  - Dagebüll-Mole
  - Neumünster Gbf
  - Tinnum/Sylt
  - Süderlügum

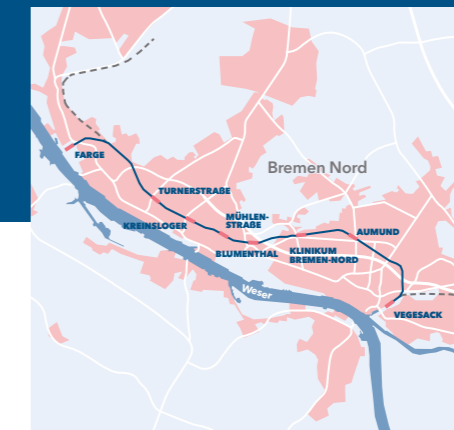
## NORDRHEIN-WESTFALEN TEUTOBURGER WALD EISENBAHN

<b>Route</b>	Versmold - Gütersloh - Hövelhof
<b>Length:</b>	55 km
<b>Service facilities:</b>	Stabling and loading tracks: Lengerich-Hohne, Gütersloh Nord, Gütersloh Ubf
<b>Usage:</b>	Freight transport



## BREMEN FARGE- VEGESACKER EISENBAHN

<b>Route:</b>	Farge - Vegesack
<b>Length:</b>	10,4 km
<b>Service facilities:</b>	Stabling tracks: Bremen-Farge
<b>Usage:</b>	Local passenger transport, freight transport



## SCHLESWIG-HOLSTEIN NORDDEUTSCHE EISENBAHN NIEBÜLL

<b>Route</b>	Niebüll - Dagebüll Niebüll - National border (-Tønder)
<b>Length:</b>	14,05 km; 12,97 km
<b>Service facilities:</b>	Stabling and loading tracks: Niebüll, Dagebüll-Mole, Neumünster Loading tracks: Süderlügum, Tinnum/Sylt
<b>Usage:</b>	Local passenger transport, freight transport





WORKSHOP

# Expertise in workshops and maintenance at the highest level

The RDC Deutschland Group is much more than just an operator of night trains and rail-car services: we are also a reliable partner for the maintenance and repair of commercial vehicles, locomotives, multiple units, and our unique seating, couchette, and sleeping cars.

In our state-of-the-art specialist workshops, innovative technology is combined with the expertise of qualified specialists. With two of our own workshop locations in Niebüll and Lengerich, as well as our partner workshop Vienna Railway Maintenance Support GmbH in Vienna, we are ideally positioned both regionally and internationally.

Covering an area of around 15,000 m<sup>2</sup>, our company Norddeutsche Eisenbahn Niebüll offers comprehensive services for rail and commercial vehicles –

both for our own fleets and for external customers. In Austria, our team is available for maintenance, overhauls, renewal, and conversion of rail vehicles.

With the acquisition of the Teutoburger Wald Eisenbahn on November 1, 2024, RDC Deutschland significantly expanded its own workshop infrastructure. The workshop in Lengerich began operations in 2025 and has since been a key component of the Group's maintenance network. The facility primarily handles scheduled maintenance and overhauls on couchette and sleeper cars, thereby supporting the growing fleet of the RDC Deutschland Group.



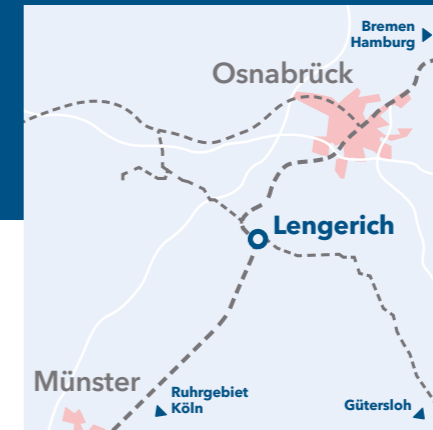
## NIEBÜLL

Rathausstraße 7  
25899 Niebüll



## LENGERICH

Lienener Straße 100  
49525 Lengerich



## WIEN

Domaniggasse 2  
1100 Wien



# Committed leadership with vision

Behind every successful company are people who take responsibility, live their visions, and shape the path to the future with a clear course. Our management team at RDC Deutschland combines decades of experience in the rail industry with a deep conviction: Mobility is more than just transportation—it is a social responsibility, a driver of innovation, and a bridge between people.

With a passion for sustainable mobility, economic thinking, and a strong focus on our employees and customers, our management team is steering the company safely through a dynamic market environment. Quality, reliability, and partnership are always at the heart of everything we do.

Our managers are committed to transparency, cooperation, and continuous development - both internally and externally. Close dialogue with customers, partners, authorities, and our own teams forms the basis for sustainable decisions and entrepreneurial success.

Taking responsibility, recognizing opportunities, and creating connections - that is the standard our management lives by every day.

**Strategy with a road-map - our management team at the annual strategy meeting.**





## DR. MARKUS HUNKEL

Chief Executive Officer

» I consider myself very fortunate to be part of a global, family-run railway company where trust, integrity, and courage guide everything we do. We love what we do, and I am very proud that RDC Deutschland has established itself as a respected partner in the night train business, infrastructure, and the railway sector in Schleswig-Holstein. «



## JULIAN RÖNSCH

COO Schleswig-Holstein

» The railroad is more than a means of transportation; it is a powerful symbol of traction that connects people and cities. The RDC Deutschland Group not only transports passengers and goods, but also uses its own infrastructure to promote mobility and enable the commitment of its employees. «

## KATHLEEN STÖCKEL

COO Night trains & Fleet

» After 20 years in the transport industry, I am delighted to have found a new home within the RDC Deutschland Group and in the night train business. Night trains connect not only cities and countries, but also people and cultures, and we want to help ensure that they become the first choice for climate-conscious travellers. «



## UTE OLDENBURG

Chief Financial Officer

» My passion for railways has been with me since childhood. My grandfather was a conductor, and I was allowed to accompany him on his rounds from a very young age. I can now put my 30 years of railway expertise to good use at the US family-owned company RDC. As a result, I look forward to going to work every day. «



## MARCUS EBERT

COO Infrastructure & Workshops

» I'm passionate about enabling sustainable mobility for people and goods. We're achieving this great feat together, every day. That makes me proud, and it's a major contribution to the world in which I want to live with my family. «

# Zugkraft, die verbindet.

Our greatest strength? Our more than 430 employees. They are the ones who create connections every day - within the team, with our customers, and along the entire rail network. Our motto, "Traction that unites," is more than just a slogan for us: it describes how we work together and our attitude.

Appreciation, feedback, and participation are central components of our modern corporate culture. Whether through employee surveys, shared guidelines, or clear objectives, we listen, we shape things together, and we grow together. Because real connections can only be made when every voice counts.



## BENEFITS FOR OUR EMPLOYEES



### **JOBRAD** MOBILE, FLEXIBLE, SUSTAINABLE

The JobRad has long since conquered our courtyards and our hearts. Whether city bike or e-bike - we make mobility possible: up to €5,000 leasing value, including comprehensive insurance, regular maintenance, and all-round service that simply comes with the ride.

### **EGYM WELLPASS** FITNESS THAT SUITS YOU

Fitness should fit into our lives - not the other way around. With the EGYM Wellpass, we offer access to over 7,500 sports and wellness partners throughout Germany. Whether it's the gym, swimming pool, yoga, or climbing - our team decides for themselves when and where they want to be active.

### **COMPANY PENSION PLAN** THINK ABOUT TOMORROW TODAY

No one can say what the future holds. But we can do something about it today. With our company pension plan, we offer the opportunity to provide for your retirement through deferred compensation - supported by an employer contribution of 15%. This is how we secure the benefits of tomorrow today.

### **GERMANY TICKET** CLIMATE-FRIENDLY TRAVEL

Sustainability starts with your daily commute. That's why the Germany ticket is a natural part of our benefits program. For simple, environmentally friendly, and flexible mobility - in line with our mission.

### **BAHN-SOZIAL-WERK** PART OF A STRONG COMMUNITY

As part of our team, you will receive free corporate membership of Bahn-Sozialwerk (BSW) - the largest social institution of the German railway family. The advantages?

- Discounted travel & vacations
- Cultural offers & leisure activities
- Discounts, advice, and help in all situations

# Skilled worker shortage? We've got this covered!

## VOCATIONAL EDUCATION

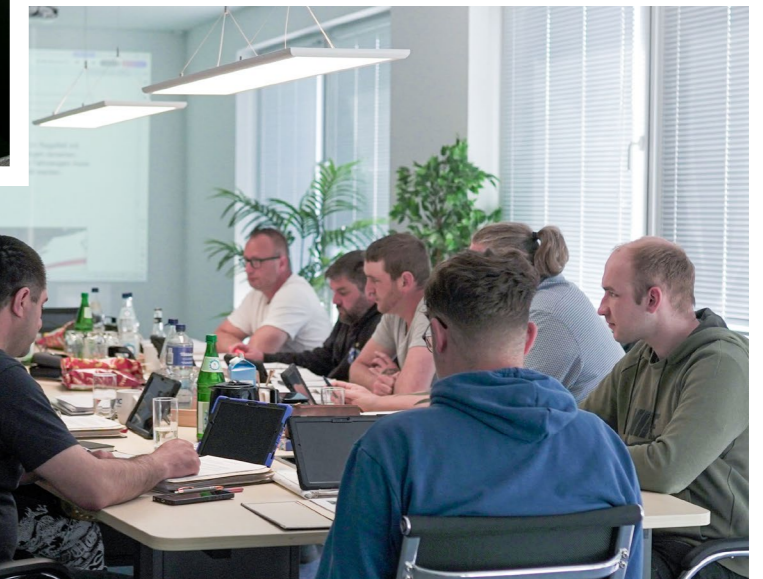
The mobility of the future starts today. To make our future sustainable, we rely on dedicated young professionals. That's why we offer school graduates qualified vocational training in four exciting fields:

- Railway worker in operations**
- Transport service clerk**
- Office management clerk**
- Automotive mechatronics technician**



## QUALIFICATION AND FURTHER TRAINING

The dream of becoming a train driver doesn't have to remain a pipe dream. In a compact and practical qualification program lasting around eleven months, we teach you all the knowledge and skills you need to drive trains safely, reliably, and in accordance with regulations. The theoretical lessons are supplemented by practical training sessions, always accompanied by experienced instructors.



# Social engagement - Doing good and talking about it.



## SAFETY ON THE ROAD

### Children learn how to behave at railroad crossings

Every year, International Children's Day in Niebüll becomes a special safety day - especially for preschoolers in the region. The little ones enjoy an exciting and educational morning learning about safety at railroad crossings. Police officer Thomas Konietzko and Sören Jensen, Head of Planning and Scheduling and local Operations Manager at NEG, are on hand to help. Together, they explain in a child-friendly and clear manner what to look out for at railroad crossings. "Safety is one of the most important children's rights. Raising awareness of the dangers of road and rail traffic at an early age is a matter close to my heart - especially as a father," emphasizes Sören Jensen.

After a short theory session, the children head out to the railroad crossings in Niebüll and Dagebüll. There, they put what they have learned into practice - with real barriers, real trains, and lots of enthusiasm. The highlight at the end of the day is a visit to the NEG workshop, where the children are given an exclusive look behind the scenes of everyday railroad life - an unforgettable experience!



## TAG DER SCHIENE

### An industry celebration for the region and a statement for the future

Our industry event, Rail Day, is characterised by a day full of excitement, activity and encounters. Whether it's handcar rides, workshop tours, locomotive tours, live music, a thrilling rescue dog show or fun and games on the bouncy castle and goal wall, the varied programme leaves nothing to be desired. The trains gleam in the sunlight, the workshop opens its doors, and everywhere you look, you can feel that this is not just about mobility - it's about people, togetherness and the future.

A special highlight of Rail Day 2024 was the first-ever panel discussion on the topic of "The importance of rail for tourist transport." The event kicked off with a panel discussion featuring **Thomas Uerschels**, mayor of Niebüll; **Dirk Flege**, managing director of the Pro-Rail Alliance; **Karl-Peter Naumann**, honorary chairman of the passenger association Pro Bahn; **Jochen Schulz**, NAH.SH; and the **management of the RDC Deutschland Group**.

The focus was on the importance of the NEG for the region and key issues for the future, such as the electrification of the west coast. Mayor Uerschels emphasized the regional relevance, while Karl-Peter Naumann, recipient of the Federal Cross of Merit, praised the "exemplary service" of the RDC Deutschland Group. Immediately afterwards, the RB65 was boarded with enthusiasm and good spirits to ceremoniously inaugurate the new Dagebüll Mole station - another step towards a modern infrastructure.

## COMMITMENT THAT INSPIRES

An event of this magnitude does not happen by chance. Behind the success are weeks of planning, team spirit, and passion. Over 30 organizational tasks were carefully coordinated - from the creative decoration of the trains to the final polish of the locomotives. The entire NEG team in Niebüll worked flat out until the last minute to make Rail Day an experience for everyone.



BYE BYE PLASTIK

## Blue AUTOZUG Sylt supports the "Sylt cleans up" project

Plastic does not belong in the sea - yet it ends up there every day: through indirect means, thoughtlessness, and a lack of awareness. It has long been clear that what we put into nature comes back to us - in the worst case, on our plates. With its passion project "Sylt räumt auf" (Sylt cleans up), the marine conservation organization Bye Bye Plastik is committed to a clean island and healthy oceans. The approach is simple and effective: "Every day is clean-up day." Every walk can be a small contribution to the environment - whether on the beach, in the forest, or at the playground.

**COLLECT TRASH. PROTECT NATURE. RAISE AWARENESS.**

The idea: When you're out and about, take a "Büddel" (a bag in northern Germany) with you and collect carelessly discarded trash. Your route, the amount collected, and a photo can be easily documented on an interactive Sylt map using the new Bye Bye Plastik app. At the end of the year, the app shows how

SPORTS SPONSORSHIP

## Strong together: RDC supports FASS Berlin

Since 2016, the blue AUTOZUG Sylt has been a reliable partner and proud sponsor of FASS Berlin. What began as a shared passion for dynamism, precision, and team spirit has long since grown into a strong bond. With its commitment, RDC AUTOZUG Sylt underscores its connection to team sports. The support for FASS Berlin is a prime example of our group's commitment to movement, ambition, and the promotion of young talent.



So we are united not only by a passion for speed, but also by the goal of achieving great things together - on the rails and on the ice.

many people took part and what they achieved together. A powerful campaign - for an even stronger community.

**BLUE AUTOZUG SYLT IS A CHANGEMAKER**

Since April 2024, RDC AUTOZUG Sylt GmbH has been one of more than 50 committed companies on the island that are taking responsibility as "changemakers." With a donation of €2,500, we supporting the initiative - a clear commitment to environmental awareness and active plastic reduction.



REVOLUTION TRAIN

## Drug prevention on rails stops off at Sylt - with support from RDC Deutschland

This is a special moment for the island of Sylt, because in the summer of 2024, the Revolution Train rolled onto the tracks at Ladestraße in the Tinum industrial park. This extraordinary stop was made possible in part by RDC Deutschland, which provided the necessary infrastructure - demonstrating the importance of social commitment in the field of education. The Revolution Train originated in the Czech Republic and is a unique drug prevention project in Europe. In a multimedia and emotionally charged setting, schoolchildren experience a journey that gets under their skin. The concept appeals to all the senses and is therefore more intense and lasting than traditional prevention formats. Children and young people aged 12 to 17 immerse themselves interactively in the lives of those affected - with real scenarios, conversations, sound, film, and haptic stimuli. It is an experience that moves and shakes people up.

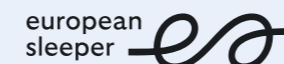
READING ALOUD BRINGS PEOPLE TOGETHER

## Nationwide reading day with the NEG

Every year, reading fun on rails is part of the nationwide reading day. The Norddeutsche Eisenbahn Niebüll (NEG), together with the Niebüll City Library, invites young listeners to a very special reading trip. Along the Niebüll ↔ Dagebüll Mole route, our trains are transformed into rolling reading salons with exciting stories, music, and lots of good cheer on board. On the occasion of the 41st Schleswig-Holstein Children's and Youth Book Weeks, the well-known lyricist and children's book author Lukas Hainer delighted primary school children with imaginative pirate stories and musical sing-alongs. Before the literary journey began, everyone got moving, laughed and got in the mood together - then it was time to board the train for the reading adventure! "Reading aloud is much more than entertainment; it lays the foundation for a feel for language, imagination, and a love of reading," said Sylvia Hoppe, assistant to the management at NEG. "As a regionally based transport company, we want to make experiences like this possible."



# Hand in hand with our partners and customers



PARTNER



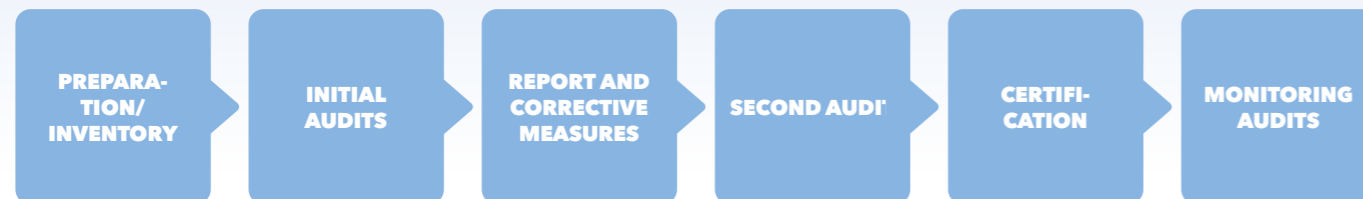
# Tested quality certified to ISO 9001

As a reliable partner in the industry, the RDC Deutschland Group consistently adheres to the highest quality standards. In September 2024, BTE BahnTouristikExpress GmbH and RDC AUTOZUG Sylt GmbH each received ISO9001:2015 certification—the internationally recognized standard for quality management. This certification underscores our commitment to continuous improvement, transparent processes, and consistent customer focus. It is an expression of our responsibility to our customers, partners, and employees—today and in the future.

By applying the ISO 9001 standard, we ensure that our services and internal processes meet the highest requirements—efficient, sustainable, and traceable.



## CERTIFICATION PROCESS



# Not only accessible by rail

## RDC Deutschland GmbH

Company headquarters:  
Altonaer Poststraße 9, 22767 Hamburg

+49 40 609464774

info@rdc-deutschland.de

rdc-deutschland.de

## BTE BahnTouristikExpress GmbH

Company headquarters:  
Fürther Straße 27, 90429 Nürnberg

Administrative headquarters:  
Altonaer Poststraße 9, 22767 Hamburg

+49 40 609464774

info@bahntouristikexpress.de

bte-autoreisezug.de

## Norddeutsche Eisenbahn Niebüll GmbH

Company headquarters:  
Bahnhofstraße 6, 25899 Niebüll

Workshop  
Rathausstraße 7, 25899 Niebüll

+49 4661 980880

info@neg-niebuell.de

neg-niebuell.de

## RDC AUTOZUG Sylt GmbH

Company headquarters:  
Industrieweg 16, 25980 Sylt

Administrative headquarters:  
Bahnhofstraße 6, 25899 Niebüll

+49 1520 9191634

info@autozug-sylt.de

autozug-sylt.de

## RDC Asset GmbH

Company headquarters:  
Altonaer Poststraße 9, 22767 Hamburg

+49 40 609464774

info@rdc-deutschland.de

rdc-deutschland.de

## Farge-Vegesacker Eisenbahn-Gesellschaft mbH

Company headquarters:  
Farger Straße 128, 28777 Bremen

+49 421 68646

info-fve@rdc-deutschland.de

rdc-deutschland.de

## Teutoburger Wald Eisenbahn GmbH

Company headquarters:  
Am Grubenhof 2, 33330 Gütersloh

+49 5241 301280

info-twe@rdc-deutschland.de

rdc-deutschland.de

# RDC

*Zugkraft, die verbindet.*

RDC Deutschland GmbH  
Altonaer Poststraße 9, 22767 Hamburg

 +49 40 609464774

 [info@rdc-deutschland.de](mailto:info@rdc-deutschland.de)

 RDC Deutschland Gruppe

 @rdc.deutschlandgruppe

 RDC Deutschland Gruppe



[rdc-deutschland.de](https://rdc-deutschland.de)

